



**CULTURELINK**  
CONSULTING

**“BRIDGING CULTURES  
CONNECTING PEOPLE”**

# **LIFE IN GENEVA**

**Personalized Consulting for Expats**

# Table of Contents

Introduction to Expat Geneva Consulting

3

Our Tailored Expatriate Services

4

Benefits of Personalized Consulting

5

Cultural Integration and Support

6

Getting Started: How to Work with us

7-8

Contact Information

9



## ABOUT EXPAT GENEVA CONSULTING

At **Expat Geneva Consulting**, we understand the challenges and opportunities that come with being an expatriate because we've lived through them ourselves. Having spent more than 20 years in the Geneva area as expatriates, we are not just consultants—we are part of the community we serve. This unique perspective allows us to offer a deeply personal and empathetic approach to helping other expatriates navigate their journey in Geneva.

Our mission is simple: to provide tailored, thoughtful consulting that empowers expatriates to thrive in Geneva, both professionally and personally. We know firsthand how important it is to adapt to a new culture and environment, and we are here to make that transition as smooth as possible.

In addition to our personal experience, we bring a wealth of professional expertise gained from working in over 10 countries across 4 continents. This global experience has enriched our understanding of cultural dynamics and enhanced our ability to provide practical solutions for expatriates in Geneva.

We go beyond just handling formalities—we equip expatriates with the tools, guidance, and insights they need to integrate into Geneva's cultural landscape, build meaningful connections, and create lasting success.

At **Expat Geneva Consulting**, we take pride in our experiences, both personal and professional, while remaining humble in our approach. We continuously learn from our clients and the evolving world around us, ensuring we offer the best support to every individual and organization we work with.

# OUR TAILORED EXPATRIATE SERVICES

SERVICES

Personalized support to help expatriates adapt seamlessly to life in Geneva, focusing on cultural integration and effective communication.

## Pre-Arrival Coaching



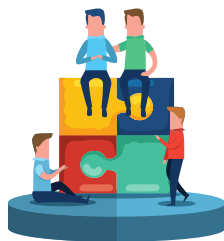
Offering guidance to expatriates before they arrive in Geneva, preparing them for cultural, professional, and historical integration.

## Communication Strategies



Guiding expatriates to optimize their communication in professional and social settings.

## Ongoing Integration



Providing continuous guidance to ensure long-term success and well-being for expatriates and their families.

## Cultural Adaptation



Helping expatriates understand and integrate into Geneva's unique cultural environment.

## Practical Relocation Support



Assisting with everyday challenges, from local customs to navigating life in Geneva.

## Geneva Culture & History



Introducing expatriates to Geneva's rich cultural heritage and historical context, enhancing their connection to the city.

# BENEFITS OF PERSONALIZED COACHING

SERVICES

"Empowering Your Journey, Bridging  
Cultures in Geneva"

## Enhanced Professional Performance

Expatriates who receive comprehensive integration support are more likely to excel in their roles, leading to increased productivity and job satisfaction. Studies indicate that organizations providing pre-departure training and cultural intelligence resources see higher success rates in international assignments.

## Improve Retention Rates

Proper integration reduces turnover among expatriates. When expatriates and their families feel supported and connected, they are more likely to remain with the organization, reducing the costs associated with recruitment and training.

## Stronger Cross-Cultural Competence

Expatriates who adapt well to their host culture develop valuable cross-cultural skills, enhancing their ability to navigate diverse environments and fostering better relationships with local colleagues and clients.

## Increased Economic Contributions

Well-integrated expatriates contribute significantly to the local economy through increased spending and investment. Research shows that migrants who successfully integrate into the labor market can boost their earnings and overall economic well-being.



"BRIDGING CULTURES  
CONNECTING PEOPLE"



# CULTURAL INTEGRATION AND SUPPORT

*Faster  
Adaptation*

*Reduce  
Stress*

*Increasing  
Networking*

*Improving  
Retention Rates*

*Family  
Well-Being*

*Job  
Satisfaction*

*Enhance  
Relationships*



# GET STARTED, HOW TO WORK WITH US

SERVICES

# How?

At CultureLink Consulting, we've designed our process to be simple, efficient, and tailored to your needs. Whether you're preparing for your move or already living in Geneva, we provide clear steps to help you get started and make the most of our services. Here's how we work together to ensure a seamless and rewarding experience:



## INITIAL CONSULTATION - LET'S DISCUSS YOUR NEEDS

The first step is an introductory consultation where we get to know you, understand your specific needs, and discuss your goals. Whether you're an individual or a company, we'll tailor our services to meet your unique requirements.



## TAILORED SERVICE PROPOSAL - CUSTOMIZED PLAN

Based on our consultation, we will provide you with a personalized service plan. This plan outlines the coaching and support you'll receive, including timelines and expected outcomes, ensuring transparency from the very beginning.



## START YOUR COACHING - BEGIN YOUR JOURNEY

Once the plan is agreed upon, we begin the coaching process. Whether it's cultural adaptation, communication training, or integration support, we start implementing the strategies designed for your success. Our sessions are interactive and hands-on, ensuring you get practical tools you can use right away.

# GET STARTED, HOW TO WORK WITH US

SERVICES

# How?



## ONGOING SUPPORT AND FEEDBACK - CONTINUOUS GROWTH

We believe in continuous support and feedback. As you progress, we stay in touch to adjust strategies as needed and address any new challenges. Our aim is for you to feel fully supported throughout your expatriate journey.



## INTEGRATION FOLLOW-UP - LONG TERM SUCCESS

After your initial coaching sessions, we continue to offer periodic follow-ups to ensure you have successfully integrated and are achieving your personal and professional goals in Geneva. We aim for long-term success, ensuring you feel confident and settled in your new environment.



## PACKAGES AND PRICING - TAILORED FOR INDIVIDUALS AND COMPANIES

We offer flexible packages that cater to individual expatriates or companies wishing to offer our services to their staff. Pricing is determined based on the number of individuals and sessions required, ensuring that the service remains tailored and cost-effective. Whether you need a few sessions for an individual or a broader package for a team, we'll provide a solution that fits your needs.



## FEEDBACK AND ADAPTATION - YOUR EXPERIENCE MATTERS

At the end of the process, we gather your feedback to understand how we can improve and adapt our services for future expats. Your input helps us refine our approach and continue delivering top-tier support.



# For inquiries, contact us.



[www.culturelinkconsulting.com](http://www.culturelinkconsulting.com)



[contact@culturelinkconsulting.com](mailto:contact@culturelinkconsulting.com)



+41 78 866 52 48



"BRIDGING CULTURES  
CONNECTING PEOPLE"